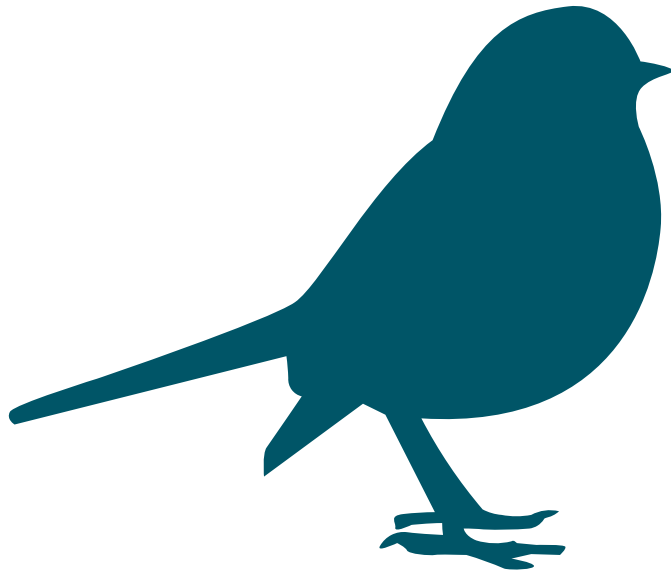




Your how-to-guide and tally chart



**Big Garden
Birdwatch**

26–28 January 2024

Taking part is as easy as 1, 2, 3

- 1** **Count the birds you see in your garden, from your balcony or in your local park for one hour between 26 and 28 January 2024.**
Use the tally boxes on the next page to count and record the birds you spot. Transfer your count to the results form. This chart shows some birds you might see. You may see others, if so record those on the results form too. Where we don't show male and female birds, the sexes look similar, but are not always identical.
- 2** **Following these simple rules makes it easy to count the birds you see.**
Only include birds that land, not those flying over. Count the highest number of each species you see at any one time, otherwise you could count the same bird twice. For example, if you saw a group of eight Starlings but then towards the end of your hour you saw six together, record '8' as your final Starling count.
- 3** **Go online and tell us what you saw at www.rspb.org.uk/birdwatch**
Submitting online is quick and easy and it means we can spend more on saving nature as it reduces our costs. Whatever you saw – even if nothing at all – please tell us. The more results we have, the better the picture we will be of how garden birds are faring.

If you are unable to submit your results online, please complete and send us the print-from-home form.

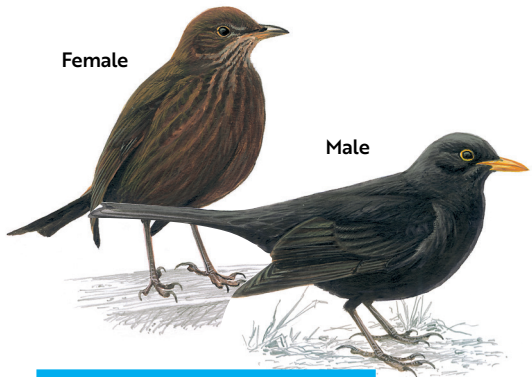
Helping you make your Big Garden Birdwatch count

Get involved on our social channels

Throughout the Big Garden Birdwatch long weekend, you can join in the conversation on our social channels. See what other nature lovers are spotting across the UK and you can upload pics and comments about your Birdwatch. Go to [#BigGardenBirdWatch](https://twitter.com/BigGardenBirdWatch)

Get ID tips and expert advice

You'll find lots of advice on identifying birds by sight and sound, as well as expert insights into garden wildlife at www.rspb.org.uk/birdwatch



Female

Male

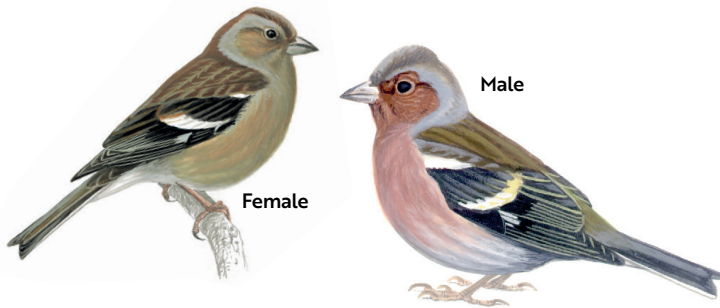
Blackbird

++++ +++++ +++++ +++++



Blue Tit

++++ +++++ +++++ +++++



Female

Male

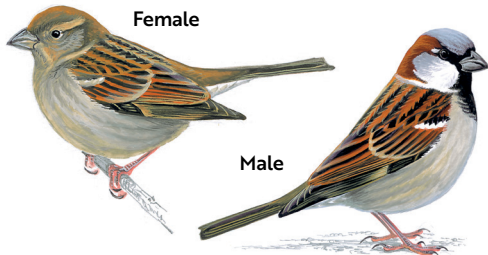
Chaffinch

++++ +++++ +++++ +++++



Coal Tit

++++ +++++ +++++ +++++



Female

Male

House Sparrow

++++ +++++ +++++ +++++



Dunnock

++++ +++++ +++++ +++++



Long-tailed Tit

++++ +++++ +++++ +++++



Collared Dove

++++ +++++ +++++ +++++



Goldfinch

++++ +++++ +++++ +++++



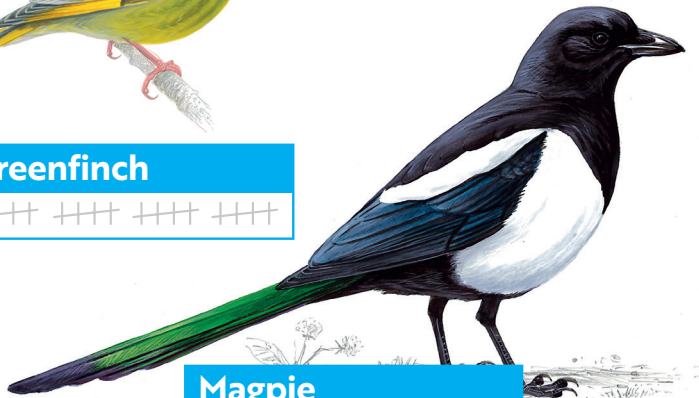
Robin

++++ +++++ +++++ +++++



Greenfinch

++++ +++++ +++++ +++++



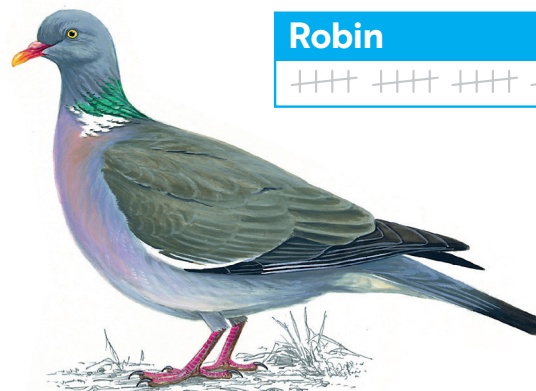
Magpie

++++ +++++ +++++ +++++



Great Tit

++++ +++++ +++++ +++++



Woodpigeon

++++ +++++ +++++ +++++



Starling

++++ +++++ +++++ +++++

